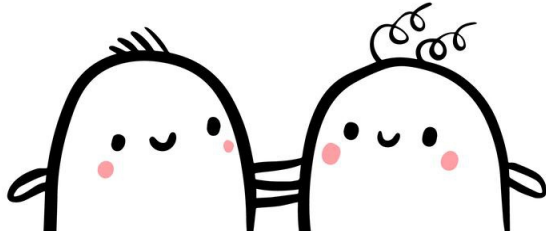


You can
trust
me.



How much can you trust someone?

Here's a way to find out.

In two's one of you puts a blindfold over their eyes and the other leads them around the house, if you are brave may be into the garden if you have one.

If you are the guide give clear instructions and make sure the person you are guiding doesn't come to any harm. Lead the blindfolded person carefully until you get back to where you began. Then swap over.

How does it feel to be led when you can't see?

Was it scary?

Were you afraid your guide might walk you into a door or wall?